




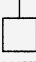





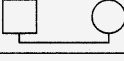
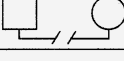
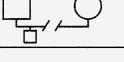
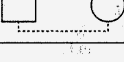
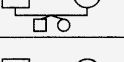
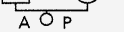


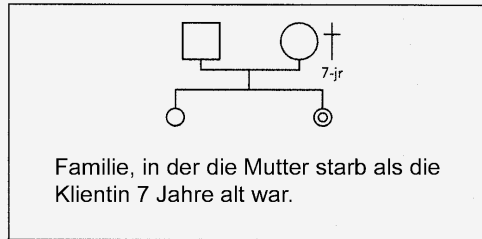
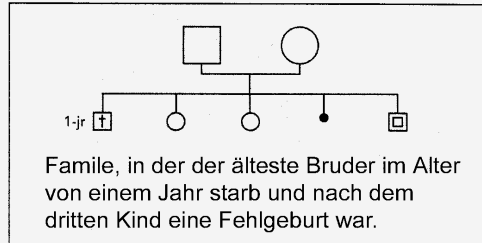
Genogramm

GENOGRAMM

(nach Katharina Stresius & Jan Jacob Stam)

 Mann	 Frau
 	Klient
	gestorben
 	Sohn Tochter
 	Totgeburt
	Fehlgeburt
	Abtreibung
	Ehe
	Scheidung
	Scheidung , Sohn bei Vater
	Dauerhafte Beziehung
	Außerehelicher Sohn
	Zwilling
	A = Adoptivtochter P = Pflegetochter

Wir arbeiten aus der Perspektive des Klienten.



- ÜBUNG :**
1. Zeichne das eigene Genogramm deiner Herkunftsfamilie und deiner Gegenwartsfamilie.
 2. Interviewe jemand anderen und zeichne dessen Genogramm.
 3. Vergleiche beide Genogramme.